

# Calf Equipment Guide

Calf Nursery • Calf Gates • Calf Shuttle



Improve Your Calf Raising Program  
with a **Sturdy Built Calf Nursery**



**C**  
calf raising



# Calf Equipment Guide

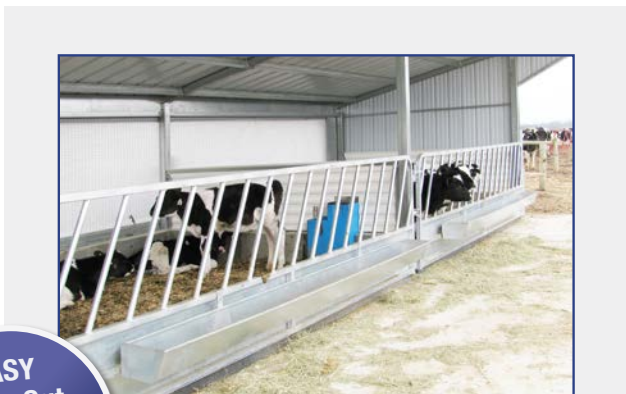
Calf Nursery • Calf Gates • Calf Shuttle



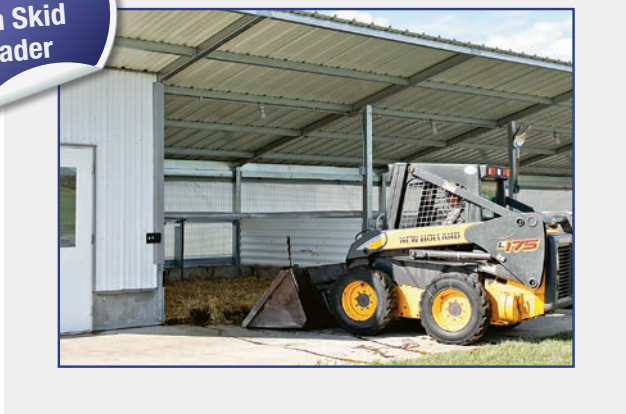
*Welcome to our Calf Raising Equipment Guide. On the following pages, we feature the Calf Nursery from Sturdy Built, a turnkey solution for raising calves in an ideal environment. The steel structure, the pen arrangement, and the ventilation system have all been designed to enhance the health and well-being of your future dairy cows.*

*See our broad range of galvanized equipment for group housing and robotic calf feeding systems, as well as innovative ventilation systems to increase calf health and comfort year-round.*

*Feel free to contact a representative with any questions and to discuss calf raising solutions to increase the productivity on your dairy farm.*



**EASY  
Clean Out  
with Skid  
Loader**



## Table of Contents

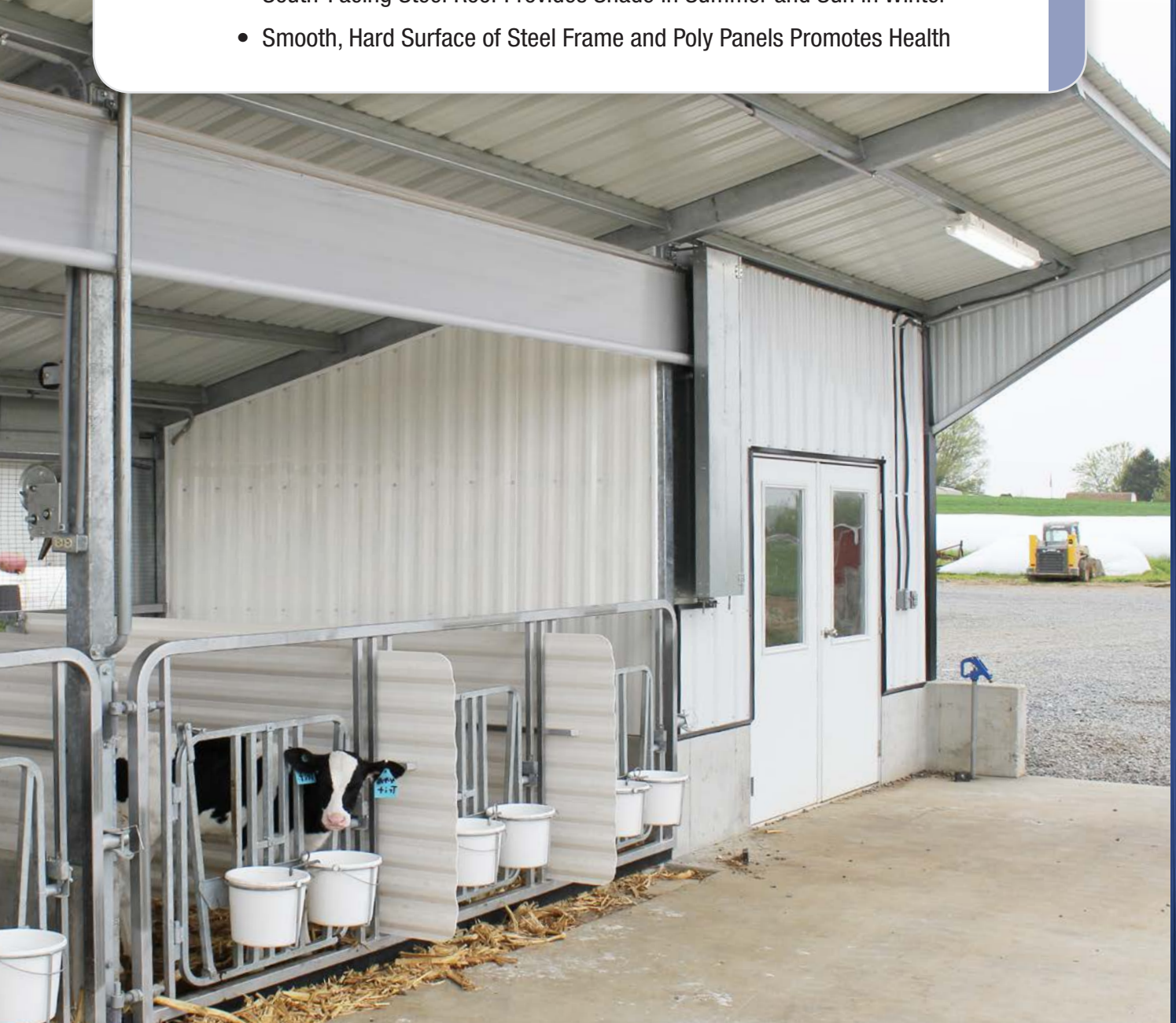
- Gallery of Calf Nurseries . . . . .4
- Calf Nursery Specs and Dimensions . . . . .6
- Calf Nursery Feed Rooms . . . . .7
- Calf Nursery Construction . . . . .8
- Sturdy Built Calf Gates . . . . .10
- Calf Gate Options . . . . .12
- Slantbar Gates for Group Pens . . . . .13
- Dividers for Group Pens . . . . .14
- Calf Nursery Custom Options . . . . .15
- Confinement for Robotic Feeder Layouts . .16
- Confinement for Free Choice Feeder Layouts .18
- Calf Gates for Any Building . . . . .19
- Calf Nursery Front Curtains . . . . .20
- Drop & Roll Curtains . . . . .22
- Calf Shuttle (Small Animal Transport) . . . . .23



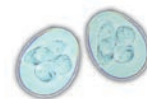
# The Sturdy Built Advantage

*Why Your Calves will Grow Better in a Sturdy Built Calf Nursery*

- Steel Frame Purlins Designed to Eliminate Bird Roosts
- South-Facing Steel Roof Provides Shade in Summer and Sun in Winter
- Smooth, Hard Surface of Steel Frame and Poly Panels Promotes Health



**“Cuddle Your Calves,  
Not the Bugs!”**



**Coccidia Oocyst**  
(microscopic view)

Bovine Coccidiosis occurs most frequently in calves that are three weeks to six months of age. These bugs commonly cause profuse diarrhea, sapping the animal of much needed nourishment for critical growth and development.

**Consider this Fact: 25% of a calf's lifetime weight gain and 50% of its lifetime height increase occur in the first six months of its life.**

Choose a Calf Nursery with its non-porous steel and poly surfaces that help to prevent the spread of these disease-causing bugs. **Coccidiosis Oocysts can harbor on porous wooden surfaces for up to one year.**



# Gallery of

*A Turnkey Shelter*



# Calf Nurseries

*Designed to Promote Growth*



The benefits are all yours.





8' x 320' • Adams County, IN



(2) 8' x 204' • Knox County, OH



10' x 192' • York County, PA



10' x 132' • Columbiana County, OH



The best environment and calf care plan for your future dairy herd.



# Sturdy Built Calf Nurseries

Specifications and Dimensions

- #1 • 2" x 4" Roof Purlins
- #2 • 11' - 11' 6" Front Height for 8' Deep Nursery
- #2 • 11' 6" - 12' Front Height for 10' Deep Nursery
- #3 • 3/12 Roof Pitch
- #4 • 8' 6" or 10' 6" Deep
- #5 • 7' Minimum Height for Skid Loader Access
- #6 • 4" x 4" Columns & 4" x 6" Rafters
- #7 • 6' 6" Overshot
- #8 • 18" - 24" High Curbs
- #9 • Front Concrete Apron





# Feed Rooms

Safe Feed Storage Area • Bottle Prep Area • Insulated



## Feed Room

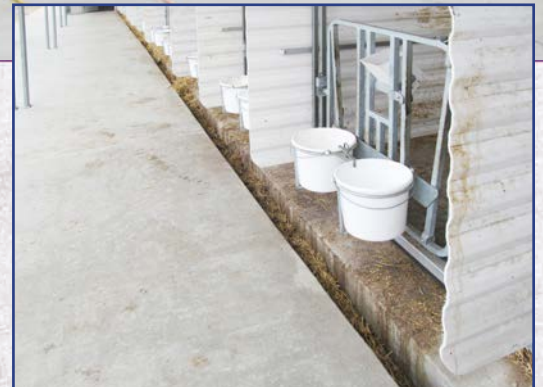
### Specs & Features

- 6' insulated double door
- 24" x 36" slider windows
- R20 foil backed insulation
- Poly sheeting on interior walls and on exterior wall in calf pens



# Calf Nursery Construction

Concrete • Steel Frame • Metal Roof & Siding • Curtains & Calf Gates



## Optional Open Gutter

Keeps your concrete apron dry and clean





The Calf Nursery is a professionally engineered steel structure set on a concrete base. The main frames and purlins use a simple, bolt-together approach that reduces construction time.

- The Calf Nursery does not require footers, but can be set on a floating concrete pad in most localities
- Structure is secured with screw-in anchors – this eliminates the need to wet set anchors at concrete pouring
- 26 Gauge painted roof panels (many color options available)
- 4" x 4" Columns and 4" x 6" rafters
- 2" x 4" Galvanized purlins



Engineered  
Bolt-Together Structure



Purlin Design  
Eliminates Bird Roost



Insulation Option  
for Roofs and Feed Rooms





# Sturdy Built Calf Gates

Gate-in-a-Gate Design • 8', 12', or 16' Lengths • Easy Individual Access



Standard Gate Sizes: 8', 12', or 16' with 2, 3, or 4 pens per gate

## Unique Calf Gate Design makes calf handling simple and reduces cleanout time

- Main frame is constructed of square, galvanized steel tubing
- Individual doors within main frame are constructed of square tubing and provide separate access to each pen
- Individual calf gates feature two-way latches, allowing doors to swing 180°
- Poly panels are removable for group housing
- Adjustable bucket racks allow for simple height adjustment for growing calves
- Divided entry gates minimize feed and water contamination
- Poly panels prevent calves from passing disease from nose to nose



Two-Way Latch on Individual Gates



# Sturdy Built Calf Gates

The Best Choice for Your Facility



**Divided Entry Interior Gate**

- #1 • Nipple Bottle Holders
- #2 • Individual Headlock
- #3 • Adjustable Height Bucket Rack
- #4 • Bucket Retainers
- #5 • Bedding Retainers
- #6 • Two-Way Latches
- #7 • Galvanized Hayracks



Single Entry Interior Gate (For Narrower Pens)





# Calf Gate Options

Convenient Upgrades for Feeding and Bedding



Nipple Bottle Holder



8-Quart Buckets



Bucket Retainers



Braden Milk Bar



Galvanized Hay Racks



Bedding Retainers  
(View from inside pen)

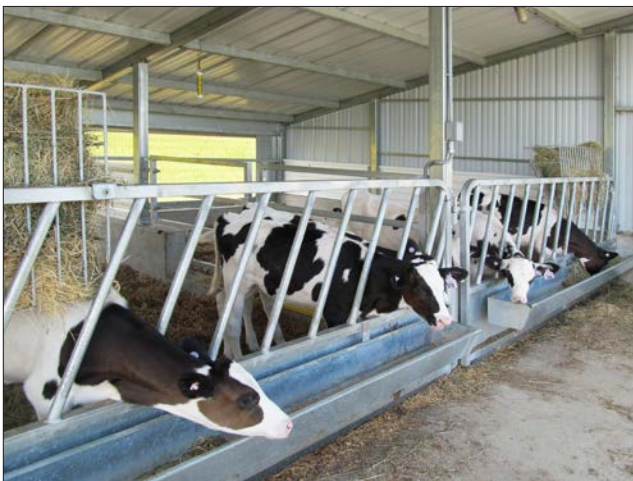


Removable Poly Divider Panels with Stiffener Bars for Additional Reinforcement



# Slantbar Gates for Group Pens

For Group-Housing Larger Calves



Detachable Galvanized or Stainless Feed Troughs

## Slantbar Specifications

- Square tubular frame constructed of durable 1.75" square x 12 gauge galvanized tubing
- Divider bars are 1.315" galvanized round tubing
- Standard divider bar spacing is 9" for calves



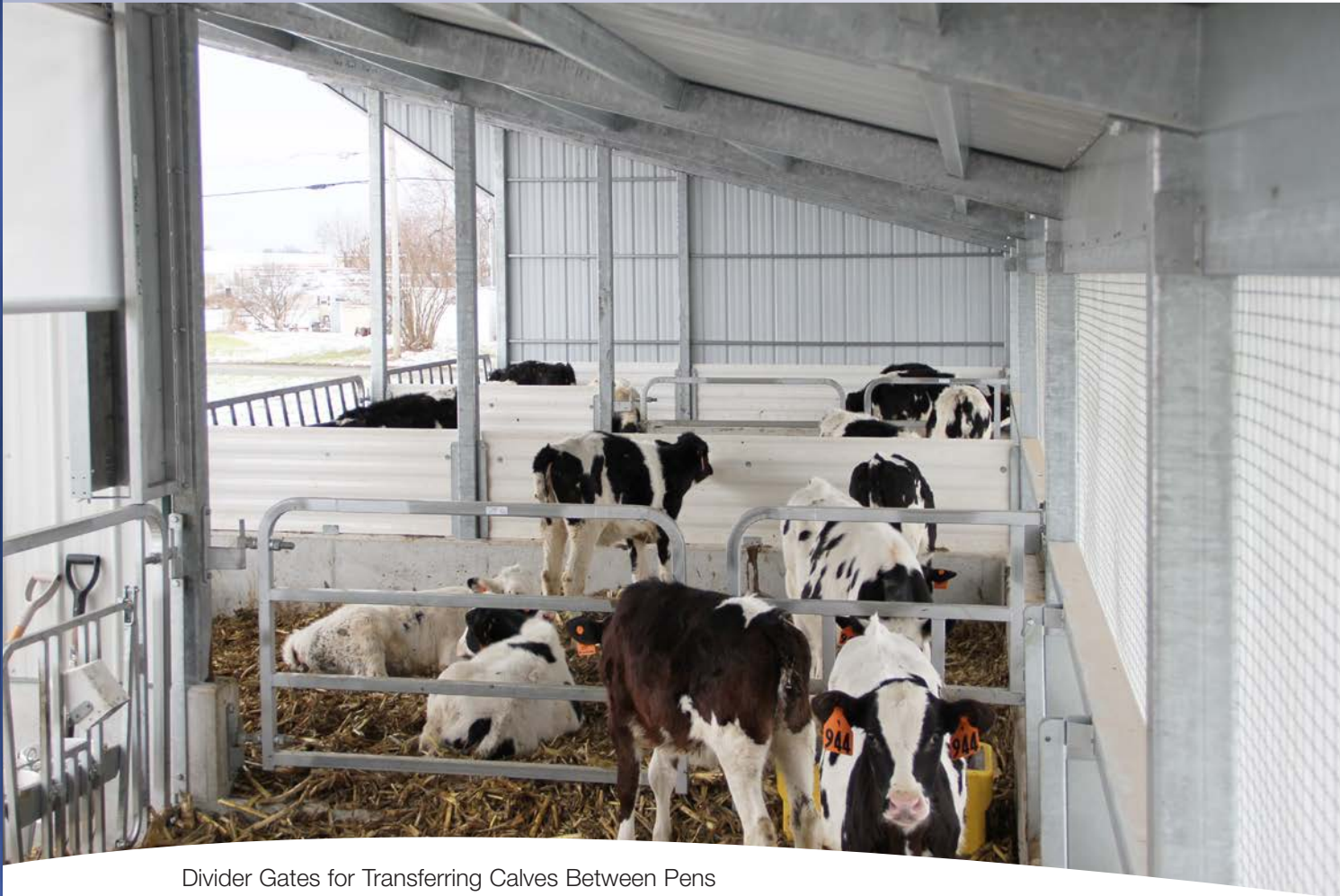
4' & 6' Galvanized Hayracks for Group Feeding





# Dividers for Group Pens

For Group-Housing Larger Calves



Divider Gates for Transferring Calves Between Pens



Group Pens with Divider Gates and Waterer



Group Pens at End of Calf Nursery



# Calf Nursery Custom Options

More Flexibility on our Trustworthy and Proven Animal Housing Systems



Storage Bay at End of Calf Nursery



Deeper Transition Pens at End of Calf Nursery



Sturdy Built Head-to-Head Enclosed Galvanized Calf Nursery



Sturdy Built Galvanized Transition Barn

Detail Oriented. **We customize for your specific needs!**

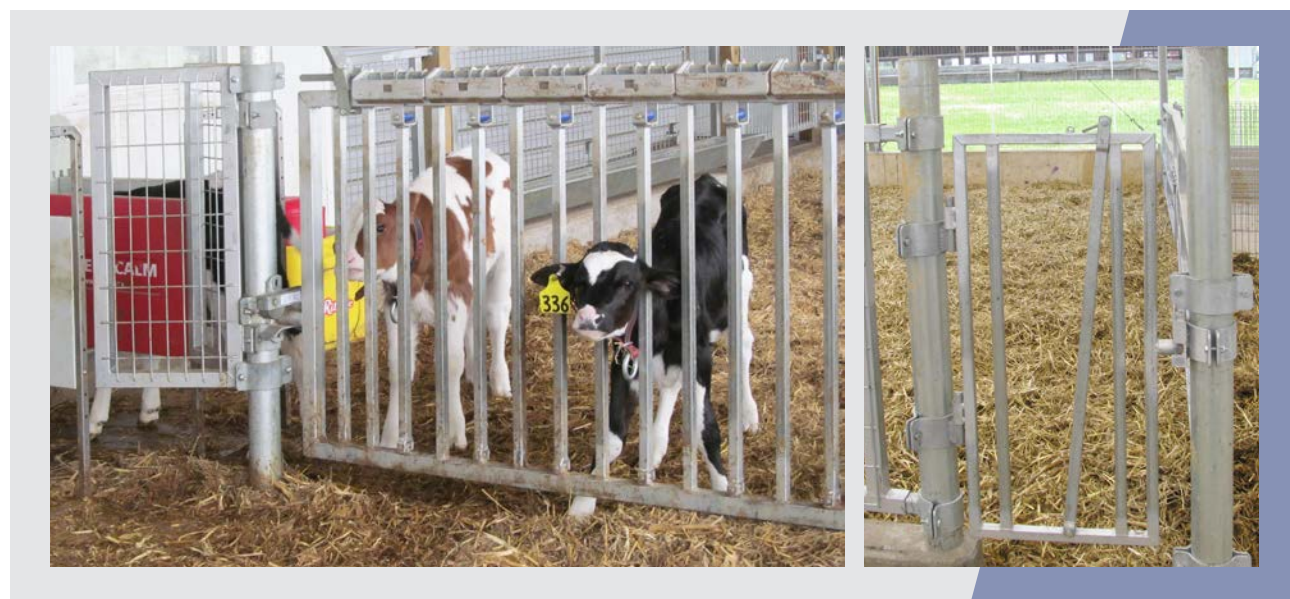


# Confinement for **Robotic Calf-Feeder** Layouts





# Confinement for **Robotic Calf-Feeder** Layouts



Headlocks - for dehorning in group pens



# Confinement for Free Choice Calf-Feeder Layouts



Contact us today for assistance in designing your free choice calf-feeder layout.



# Calf Gates for Any Building

Custom Built to Fit • Floor Mounting Systems



Individual Calf Pens • Floor Mount System



Raised Height Calf Gates for Easier Access



Individual Calf Pens Inside Free Span Building



# Arctic Front Curtains

Extreme Weather Protection for You & Your Calves



**Arctic Front Curtain**  
Roll up for Sunny Days



**Arctic Front Curtain**  
Close the Curtain for Stormy Weather



# Windbreaker Curtains

Provide a Comfortable, Controlled Environment for the Next Generation



The Sturdy Built Windbreaker curtain system works well with the conventional Sturdy Built calf nursery design. This curtain rolls down to the top of the calf gates. The tubular wind restraint on each building support post protects and secures the curtain material. This curtain can readily be adjusted to accommodate various weather conditions.

## Hover Panels



The optional Hover Panels offer extra protection for your calves in especially cold or stormy weather. Hover panels from Sturdy Built help shield from blowing rain or snow. The panels are 12' or 16' wide and are lifted with gas cylinders for convenient one-man management. *Ask your representative for more details.*



# Sturdy Built Drop & Roll Curtains

## Advanced Ventilation System



Good ventilation and fresh air are critical to the health of your calves. Sturdy Built offers innovative curtain systems that help you get the right results.

- Specially designed for the needs of calves in changing weather
- Ventilate from top, bottom, or both
- Rolls up completely onto top header for summer storage
- Keder tubing rolls curtain material smoothly and evenly
- Compatible with manual or electric drives
- Galvanized curtain doors provide easy drive accessibility
- 16 oz. super clear vinyl curtain material (standard)





# Sturdy Built Calf Shuttle

for Small Animal Transport



## Calf Shuttle Features

- Pick up the small animals in pasture or maternity area and **carry them to the nursery**
- Take them from the nursery and load them on the truck to **transport to the grower** or to auction
- **Rubber floor for animal comfort** and traction; promotes easy cleanout
- Strong and lightweight **sanitary poly doors**
- Works with **forks on all sides**
- Optional skid loader quick attach or **3 point** attachment
- *Standard Size is 4' x 6' and fits well on pickup bed – Shipping Weight is 550 lbs.*

**Convenient Transport  
from Farm to Market!**





